

NOTES:  
SIDE TABS TO BE ADDED AS NEEDED

LINESET SCHEDULE	
DESCRIPTION	TRIM
-	-
-	-
CYC	-

22 - STAR DROP	-
21 - FULL BLACK	-
6TH ELECTRIC	-
20 - BLACK SCRIM	-
19 - 4TH LEGS	-
18 -	-
17 -	-

5TH ELECTRIC	-
16 - 3RD LEGS	-
15 - 3RD BORDER	-
14 -	-
13 -	-
12 -	-
11 -	-
4TH ELECTRIC	-

10 - 2ND LEGS	-
9 - 2ND BORDER	-
8 -	-
7 -	-

3RD ELECTRIC	-
6 -	-
5 -	-
4 - 1 ST LEGS	-
3 - 1ST BORDER	-
2ND ELECTRIC	-

1ST ELECTRIC	-
2 - HOTEL LIGHTBOX	-
1 - TEASER/BORDER	-
FIRE CURTAIN	-

BUILD

THE COLLEGE AT BROCKPORT  
TOWER MAINSTAGE THEATRE

THE CRIPPLE OF  
INISHMAAN

By:  
MARTIN McDONAGH

Director:  
PADRAIC LILLIS

Lighting Designer:  
GARY MUSANTE

Costume Designer:  
GAIL ARGETSINGER

Production Manager:  
PAUL SCHREINER

Technical Director:  
GARY MUSANTE

SCOTT TEDMON-JONES

SCOTT@STDESIGN.COM 412-760-4476 WWW.STDESIGN.COM



THIS DRAWING AND THE IDEAS, ARRANGEMENTS, DESIGNS AND PLANS CONTAINED HEREIN OR REPRESENTED THEREBY ARE OWNED AND REMAIN THE PROPERTY OF SCOTT TEDMON-JONES, AND HAVE BEEN CREATED AND DEVELOPED FOR USE ON THE PROJECT SPECIFIED. NEITHER THIS DRAWING, NOR ANY OF SUCH IDEAS, ARRANGEMENTS, DESIGNS OR PLANS SHALL BE APPROPRIATED BY OR DISCLOSED TO ANY PERSON OR FIRM FOR ANY USE WHATSOEVER, EXCEPT BY WRITTEN PERMISSION OF SCOTT TEDMON-JONES.

THESE DRAWINGS REPRESENT VISUAL CONCEPTS AND CONSTRUCTION SUGGESTIONS ONLY. THE DESIGNER IS NOT QUALIFIED TO DETERMINE THE STRUCTURAL APPROPRIATENESS OF THESE DESIGNS, AND WILL NOT ASSUME RESPONSIBILITY FOR IMPROPER ENGINEERING, CONSTRUCTION AND/OR HANDLING OF THE SCENERY REPRESENTED HEREIN.

REVISIONS:

1024

- CHANGED CYC

1025

- ADDED LEGS/SCRIM

1026

- SR WALL IS STATIONARY

1027

- MAMMY'S BED IS SEPARATE FROM SL WALL

1028

- CHANGED SL WALL LAYOUT

1029

- ADDED ADDITIONAL FURNITURE

1030

- UPDATED LINE SET SCHEDULE/ADDED ROUGH PROJECTOR PLACEMENT

1031

- UPDATED LINE SET SCHEDULE

1110

- MOVED HOTEL SIGN SR

1111

- ADJUSTED HOTEL SIGN DIMENSIONS

DRAFTED BY:  
SCOTT TEDMON-JONES

DATE:  
NOVEMBER 10, 2014

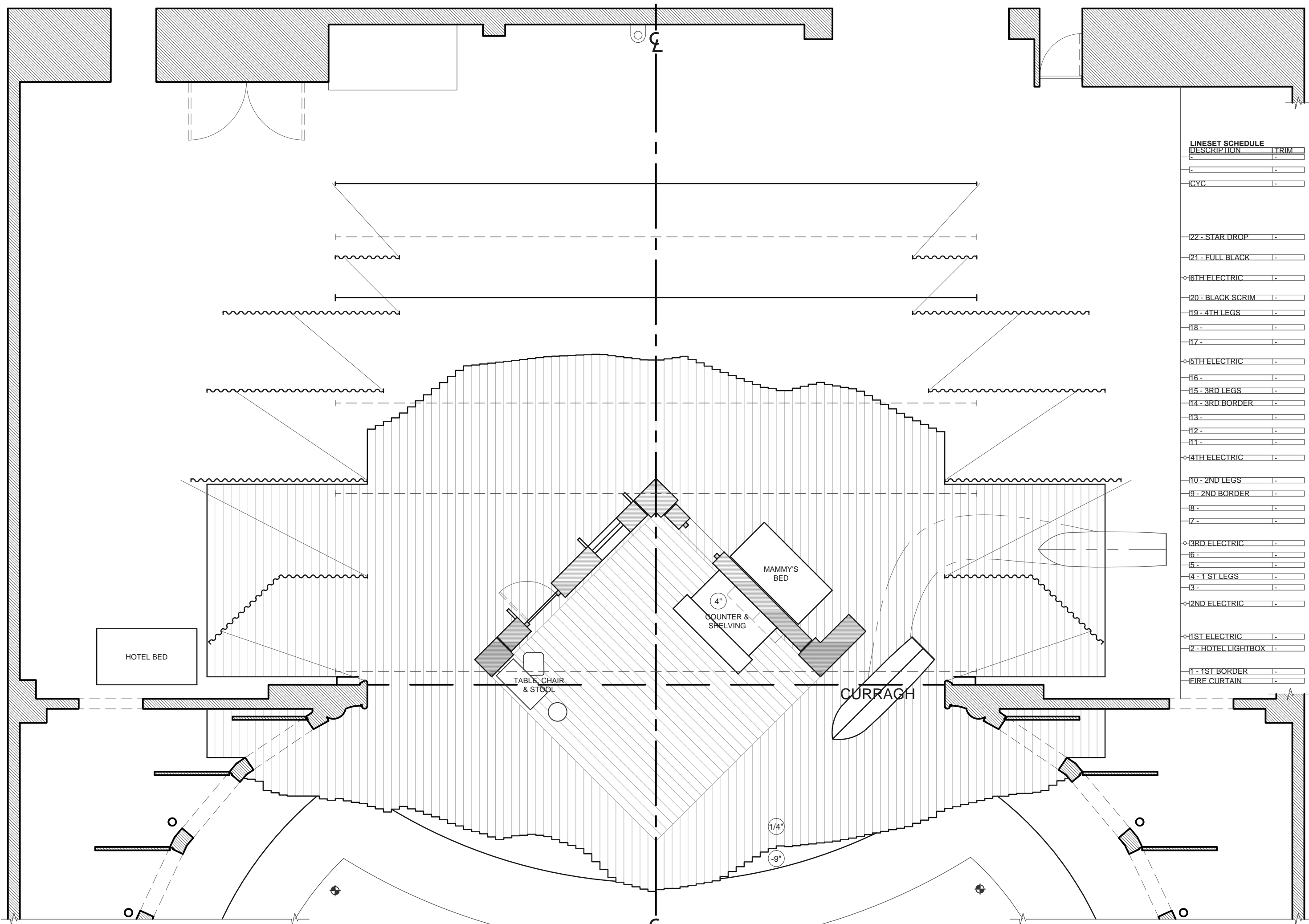
SCALE:  
3/8" = 1' - 0"

PLATE:  
1

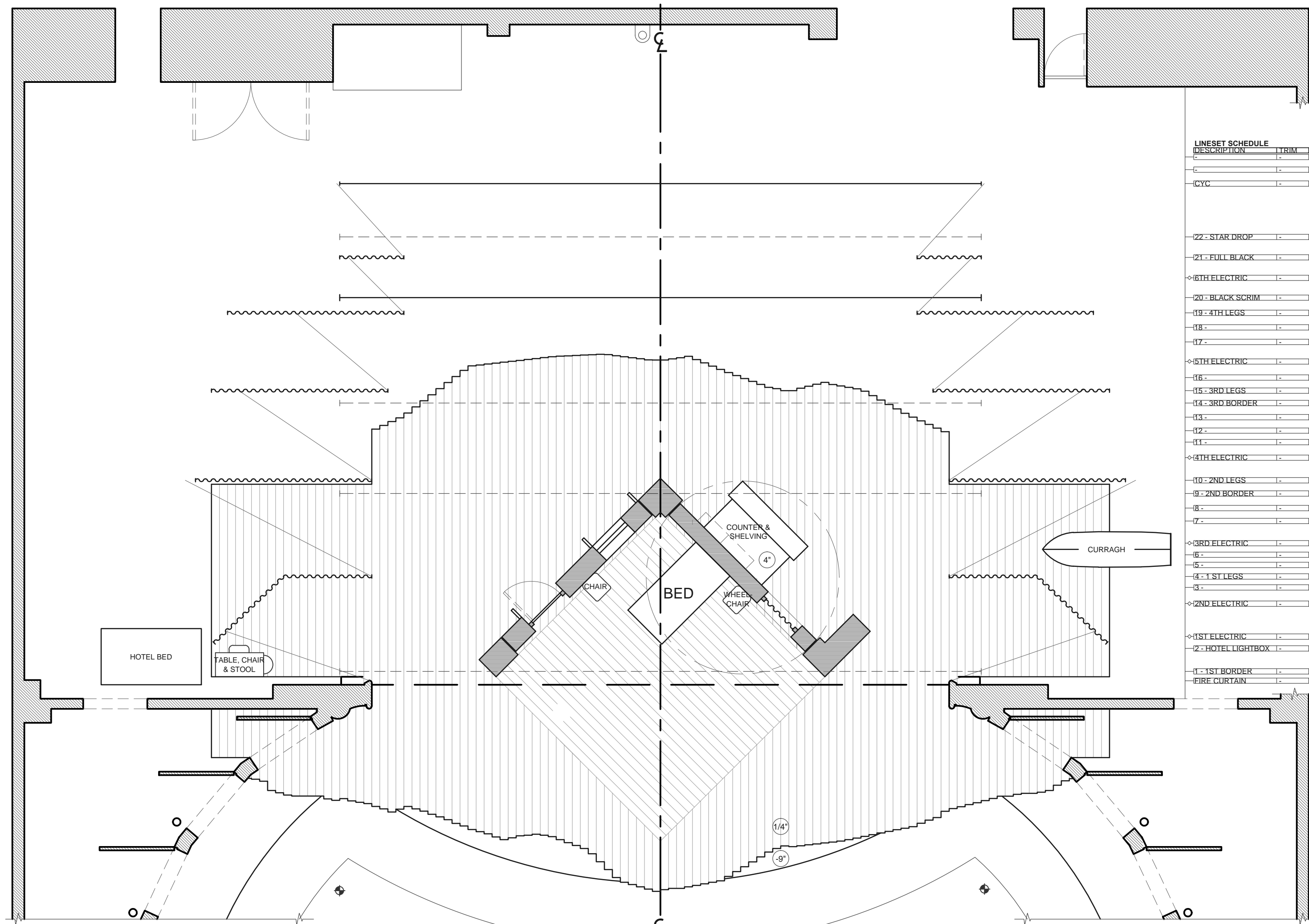
OF 6

GROUND PLAN

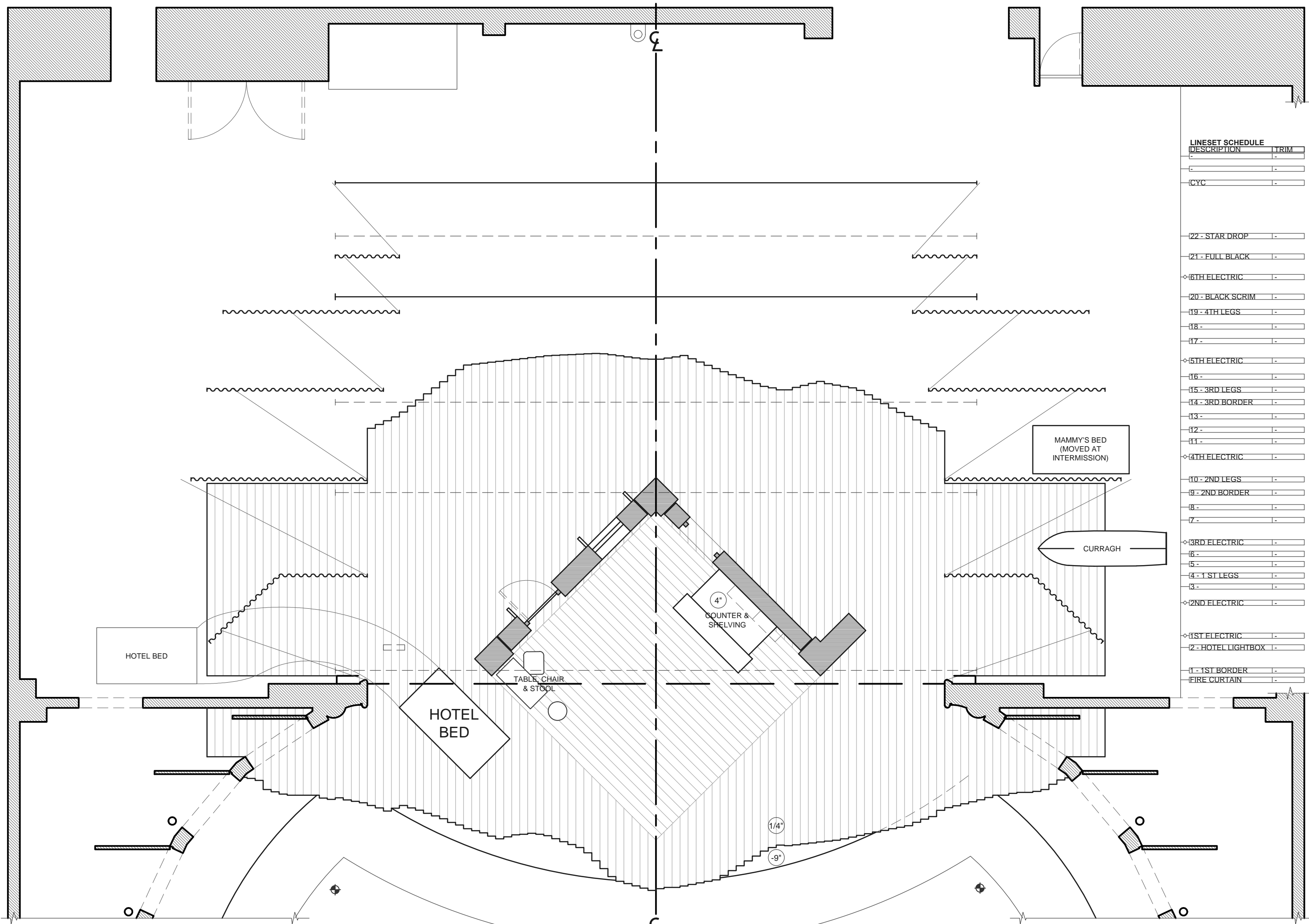




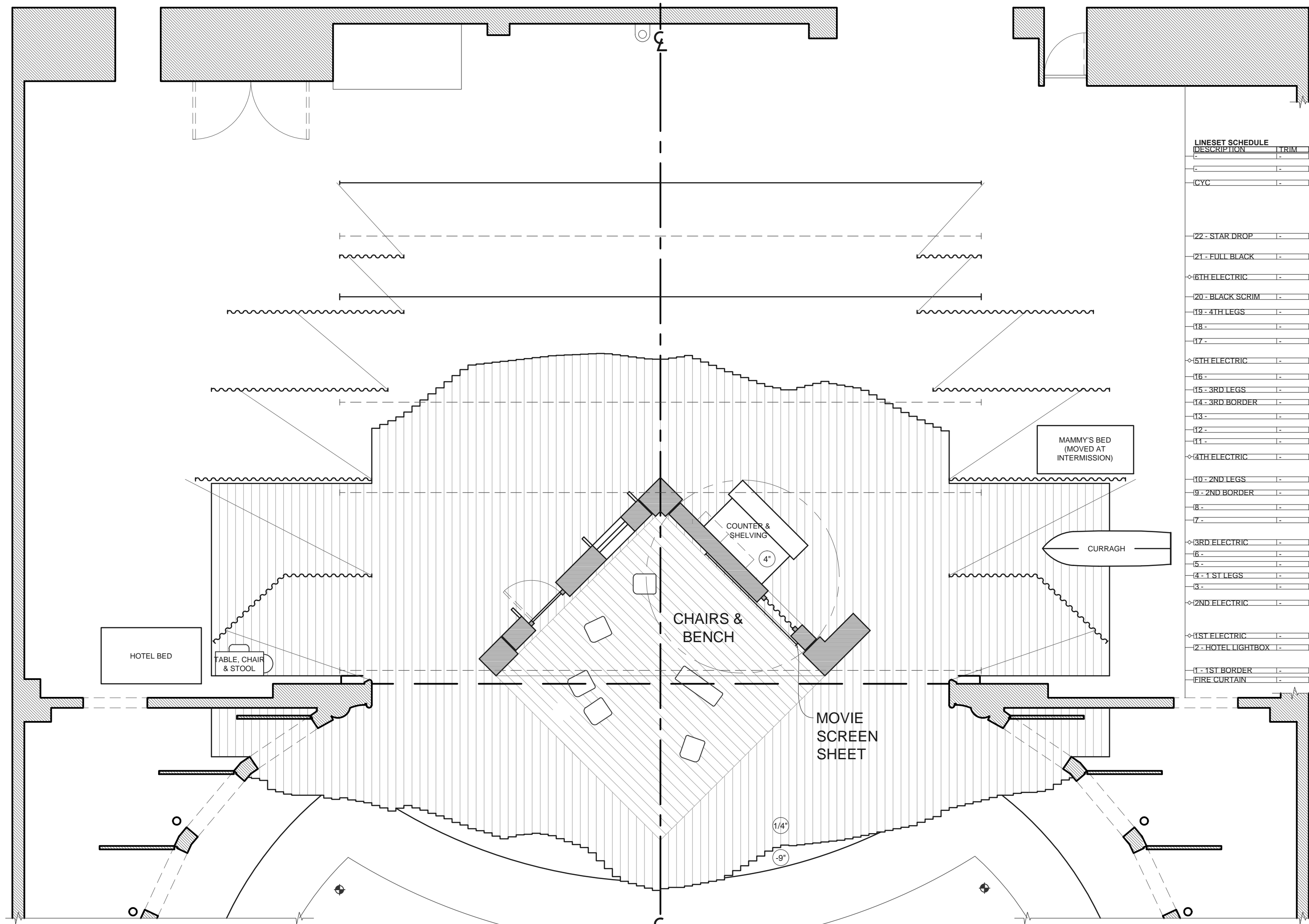
THE SHORE  
ACT 1 SCENE 3



MAMMY O'DOUGAL'S  
ACT 1 SCENE 4



HOLLYWOOD HOTEL ROOM  
ACT 2 SCENE 2



THE CHURCH  
ACT 2 SCENE 4

BUILD

THE COLLEGE AT BROCKPORT  
TOWER MAINSTAGE THEATRE

THE CRIPPLE OF  
INISHMAAN

By:

MARTIN McDONAGH

Director:

PADRAIC LILLIS

Lighting Designer:

GARY MUSANTE

Costume Designer:

GAIL ARGETSINGER

Production Manager:

PAUL SCHREINER

Technical Director:

GARY MUSANTE

SCOTT TEDMON-JONES

SCOTT@STDESIGN.COM 412-760-4474 WWW.STDESIGN.COM

THIS DRAWING AND THE IDEAS, ARRANGEMENTS, DESIGNS AND PLANS CONTAINED HEREIN OR REPRESENTED THEREBY ARE OWNED AND REMAIN THE PROPERTY OF SCOTT TEDMON-JONES, AND HAVE BEEN CREATED AND DEVELOPED FOR USE ON AND IN CONNECTION WITH THE PROJECT SPECIFIED. NEITHER THIS DRAWING, NOR ANY OF SUCH IDEAS, ARRANGEMENTS, DESIGNS OR PLANS SHALL BE APPROPRIATED BY OR DISCLOSED TO ANY PERSON OR FIRM FOR ANY USE, WHATSOEVER, EXCEPT BY WRITTEN PERMISSION OF SCOTT TEDMON-JONES.

THESE DRAWINGS REPRESENT VISUAL CONCEPTS AND CONSTRUCTION SUGGESTIONS ONLY. THE DESIGNER IS NOT QUALIFIED TO DETERMINE THE STRUCTURAL APPROPRIATENESS OF THESE DESIGNS, AND WILL NOT ASSUME RESPONSIBILITY FOR IMPROPER ENGINEERING, CONSTRUCTION AND/OR HANDLING OF THE SCENERY REPRESENTED HEREIN.

REVISIONS:

- 1024 - CHANGED CYC
- ADDED LEGS/SCRM
- SR WALL IS STATIONARY
- MAMMY'S BED IS SEPARATE FROM SL WALL
- CHANGED SL WALL LAYOUT
- ADDED ADDITIONAL FURNITURE
- 1025 - UPDATED SHIFT PLOTS
- 1110 - MOVED HOTEL SIGN SR (HOTEL ROOM PLAN)
- ADJUSTED HOTEL SIGN DIMENSIONS

DRAFTED BY:

SCOTT TEDMON-JONES

DATE:

NOVEMBER 10, 2014

SCALE:

3/16" = 1' - 0"

PLATE:

2

OF 6

GROUND PLAN -  
SHIFT PLOTS

BUILD

THE COLLEGE AT BROCKPORT  
TOWER MAINSTAGE THEATRE

THE CRIPPLE OF  
INISHMAAN

By:  
MARTIN McDONAGH

Director:  
PADRAIC LILLIS

Lighting Designer:  
GARY MUSANTE

Costume Designer:  
GAIL ARGETSINGER

Production Manager:  
PAUL SCHREINER

Technical Director:  
GARY MUSANTE

SCOTT TEDMON-JONES  
SCOTT@ST.DESIGN.COM 412-760-4476 WWW.ST.DESIGN.COM



SD 0602  
SCENIC DESIGNER  
Scott Tedmon-Jones

THIS DRAWING AND THE IDEAS, ARRANGEMENTS, DESIGNS AND PLANS CONTAINED HEREIN OR REPRESENTED THEREBY ARE OWNED AND REMAIN THE PROPERTY OF SCOTT TEDMON-JONES, AND HAVE BEEN CREATED AND DEVELOPED FOR USE ON AND IN CONNECTION WITH THE PROJECT SPECIFIED. NEITHER THIS DRAWING, NOR ANY OF SUCH IDEAS, ARRANGEMENTS, DESIGNS OR PLANS SHALL BE APPROPRIATED BY OR DISCLOSED TO ANY PERSON OR FIRM FOR ANY USE, WHATSOEVER, EXCEPT BY WRITTEN PERMISSION OF SCOTT TEDMON-JONES.

THESE DRAWINGS REPRESENT VISUAL CONCEPTS AND CONSTRUCTION SUGGESTIONS ONLY. THE DESIGNER IS NOT QUALIFIED TO DETERMINE THE STRUCTURAL APPROPRIATENESS OF THESE DESIGNS, AND WILL NOT ASSUME RESPONSIBILITY FOR IMPROPER ENGINEERING, CONSTRUCTION AND/OR HANDLING OF THE SCENERY REPRESENTED HEREIN.

REVISIONS:

10/24

- CHANGED CYC  
- ADDED LEGS/SCRM  
- SR WALL IS STATIONARY  
- MAMMY'S BED IS SEPARATE FROM SL WALL  
- CHANGED SL WALL LAYOUT

10/26

- UPDATED LINE SET SCHEDULE

10/28

- UPDATED LINE SET SCHEDULE

11/10

- ADJUSTED HOTEL SIGN DIMENSIONS

DRAFTED BY:  
SCOTT TEDMON-JONES

DATE:  
NOVEMBER 10, 2014

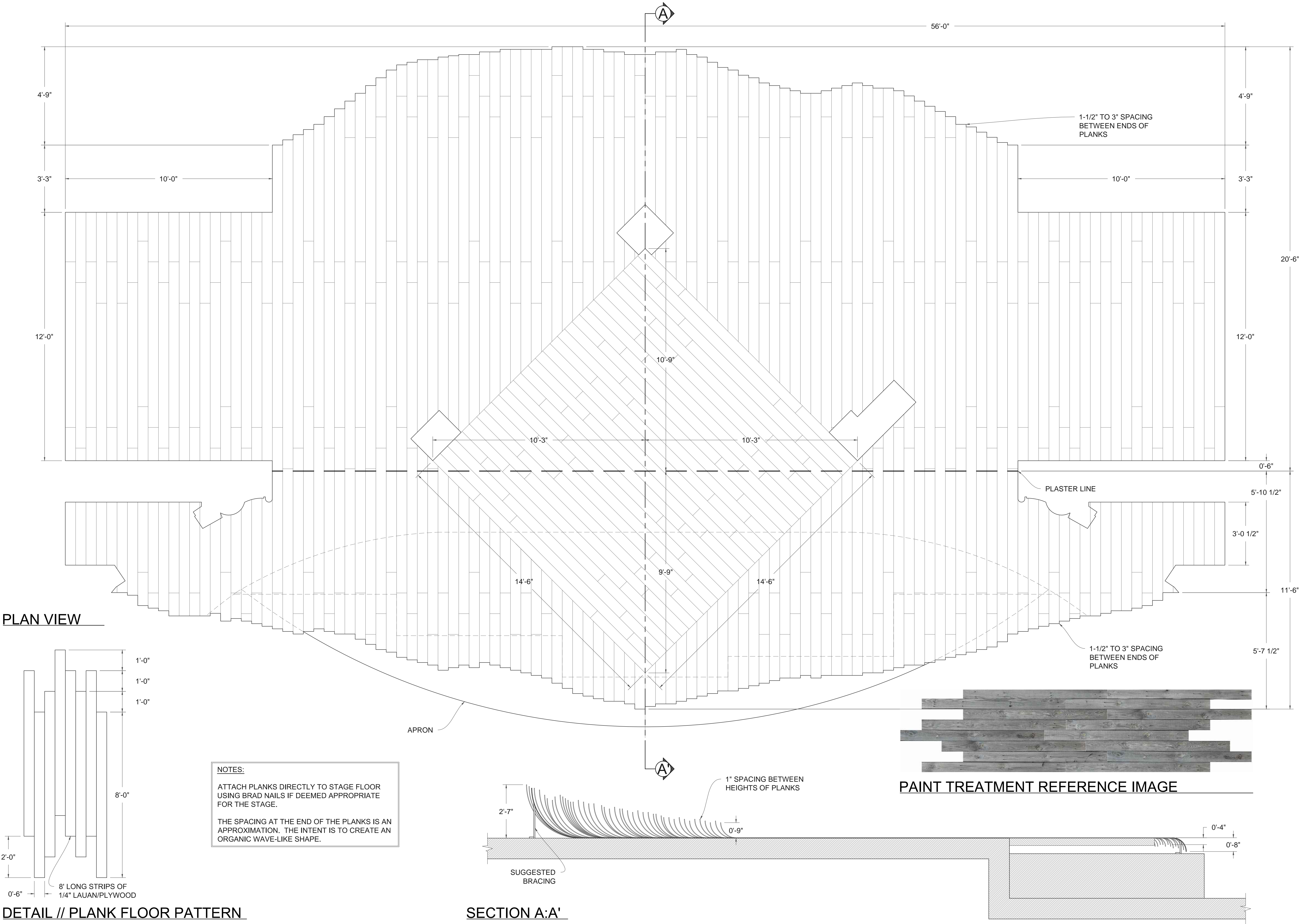
SCALE:  
1/4" = 1' - 0"

PLATE:  
3

OF 6

SL CL SECTION





BUILD

THE COLLEGE AT BROCKPORT  
TOWER MAINSTAGE THEATRE

THE CRIPPLE OF  
INISHMAAN

By:

MARTIN McDONAGH

Director:

PADRAIC LILLIS

Lighting Designer:

GARY MUSANTE

Costume Designer:

GAIL ARGETSINGER

Production Manager:

PAUL SCHREINER

Technical Director:

GARY MUSANTE

SCOTT TEDMON-JONES

SCOTT@STDESIGN.COM 412-760-4476 WWW.STDESIGN.COM

SD 0602  
SCENIC DESIGNER  
Scott Tedmon-Jones

THIS DRAWING AND THE IDEAS, ARRANGEMENTS, DESIGNS AND PLANS CONTAINED HEREIN OR REPRESENTED THEREBY ARE OWNED AND REMAIN THE PROPERTY OF SCOTT TEDMON-JONES, AND HAVE BEEN CREATED AND DEVELOPED FOR USE ON AND IN CONNECTION WITH THE PROJECT SPECIFIED. NEITHER THIS DRAWING, NOR ANY OF SUCH IDEAS, ARRANGEMENTS, DESIGNS OR PLANS SHALL BE APPROPRIATED BY OR DISCLOSED TO ANY PERSON OR FIRM FOR ANY USE, WHATSOEVER, EXCEPT BY WRITTEN PERMISSION OF SCOTT TEDMON-JONES.

THESE DRAWINGS REPRESENT VISUAL CONCEPTS AND CONSTRUCTION SUGGESTIONS ONLY. THE DESIGNER IS NOT QUALIFIED TO DETERMINE THE STRUCTURAL APPROPRIATENESS OF THESE DESIGNS, AND WILL NOT ASSUME RESPONSIBILITY FOR IMPROPER ENGINEERING, CONSTRUCTION AND/OR HANDLING OF THE SCENERY REPRESENTED HEREIN.

REVISIONS:

- ADJUSTED USL AND USR SHAPES BASED ON THE 2ND LEGS

DRAFTED BY:

SCOTT TEDMON-JONES

DATE:

OCTOBER 27, 2014

SCALE:

1/2" = 1' - 0"

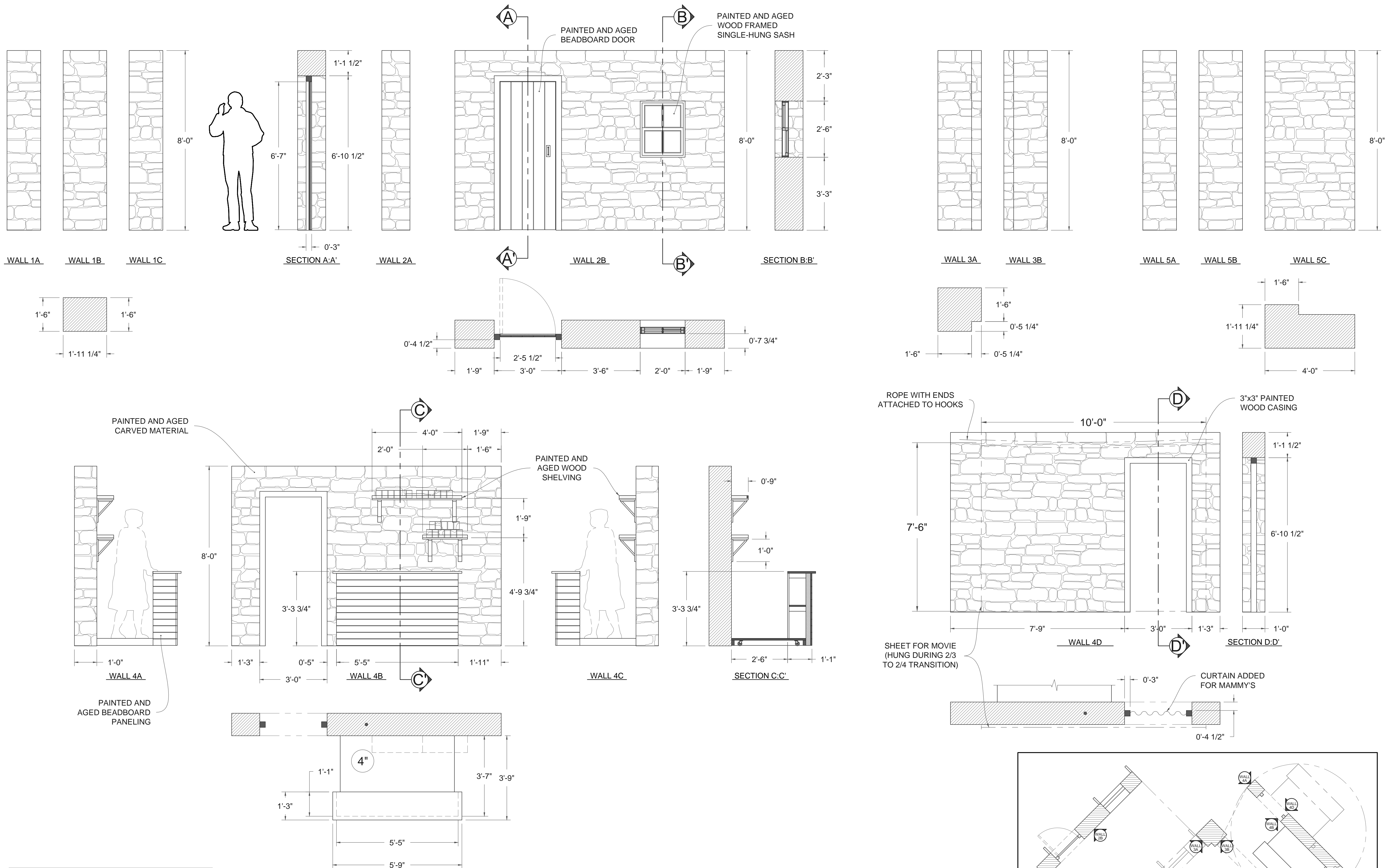
PLATE:

4

OF 6

DECK ELEVATION





**NOTES:**

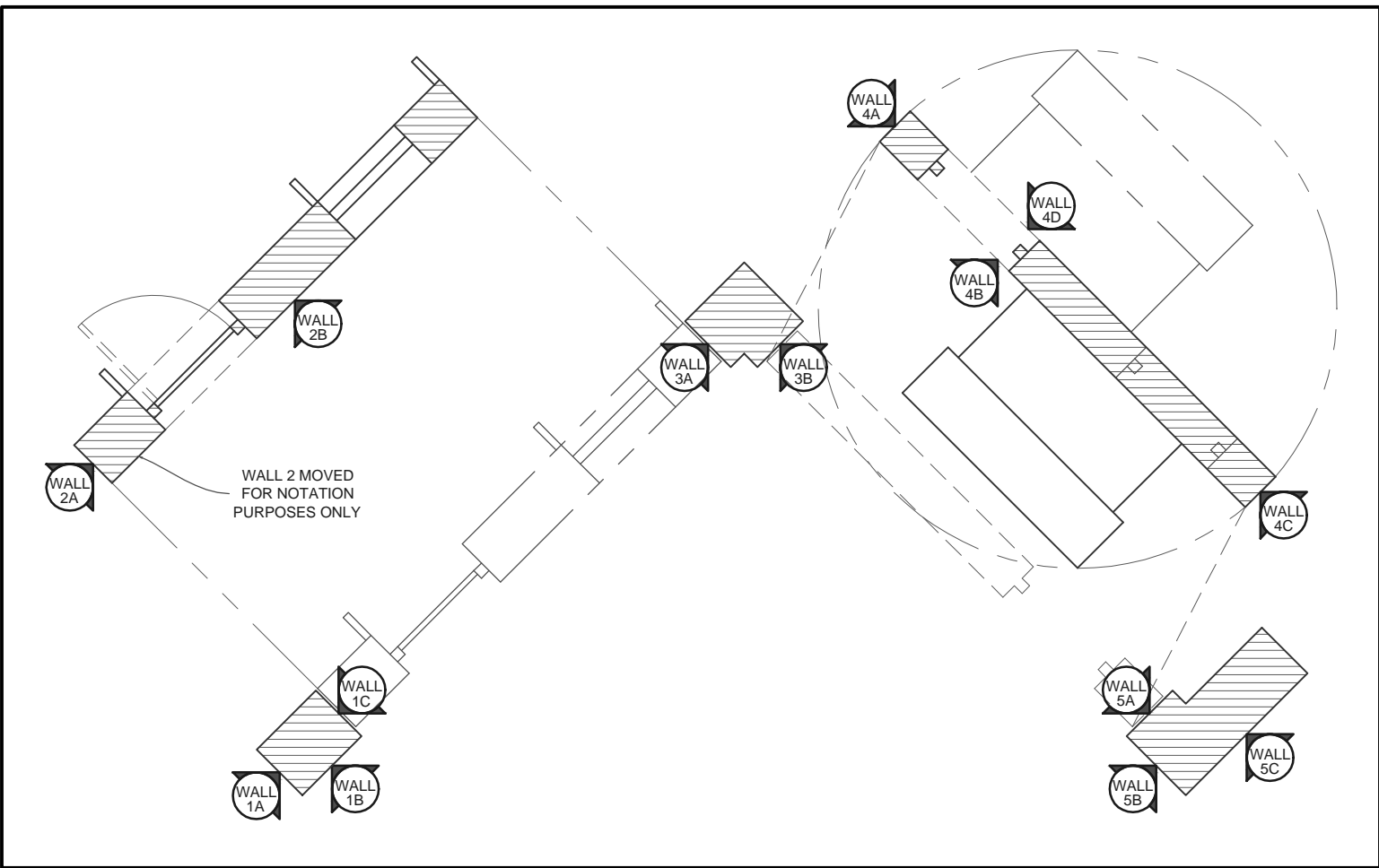
WALLS 1 THROUGH 3 CAN BE PERMANENTLY ATTACHED TOGETHER NOW THAT WALL 2 NO LONGER MOVES IN ACT 2.

WALL 2 NEEDS TO WITHSTAND A DOOR SLAM.

WALL 4 ROTATES AROUND ITS CENTER - SEE GROUND PLAN



REFERENCE IMAGES



WALL LAYOUT DETAIL

SCALE: 3/32" = 1' - 0"

BUILD

THE COLLEGE AT BROCKPORT  
TOWER MAINSTAGE THEATRE

THE CRIPPLE OF  
INISHMAAN

By:  
Director:  
Lighting Designer:  
Costume Designer:  
Production Manager:  
Technical Director:

MARTIN McDONAGH  
PADRAIC LILLIS  
GARY MUSANTE  
GAIL ARGETSINGER  
PAUL SCHREINER  
GARY MUSANTE

SCOTT TEDMON-JONES  
SCOTT@STDESIGN.COM 412-760-4476 WWW.STDESIGN.COM

THIS DRAWING AND THE IDEAS, ARRANGEMENTS, DESIGNS AND PLANS CONTAINED HEREIN OR REPRESENTED THEREBY ARE OWNED AND REMAIN THE PROPERTY OF SCOTT TEDMON-JONES, AND HAVE BEEN CREATED AND DEVELOPED FOR USE ON AND IN CONNECTION WITH THE PROJECT SPECIFIED. NEITHER THIS DRAWING, NOR ANY OF SUCH IDEAS, ARRANGEMENTS, DESIGNS OR PLANS SHALL BE APPROPRIATED BY OR DISCLOSED TO ANY PERSON OR FIRM FOR ANY USE, WHATSOEVER, EXCEPT BY WRITTEN PERMISSION OF SCOTT TEDMON-JONES.

THESE DRAWINGS REPRESENT VISUAL CONCEPTS AND CONSTRUCTION SUGGESTIONS ONLY. THE DESIGNER IS NOT QUALIFIED TO DETERMINE THE STRUCTURAL APPROPRIATENESS OF THESE DESIGNS, AND WILL NOT ASSUME RESPONSIBILITY FOR IMPROPER ENGINEERING CONSTRUCTION AND/OR HANDLING OF THE SCENERY.

REVISIONS:

- SR WALL IS STATIONARY
- MAMMY'S BED IS SEPARATE FROM SL WALL
- CHANGED SL WALL LAYOUT
- CHANGED COUNTER
- ADDED SHEET FOR MOVIE SCREEN

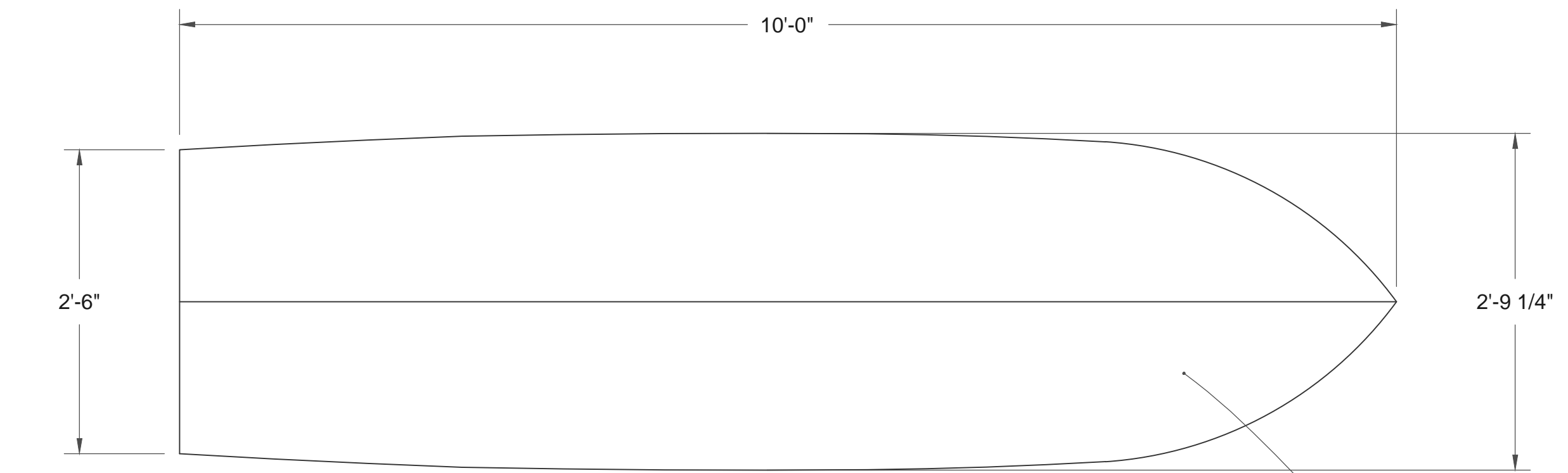
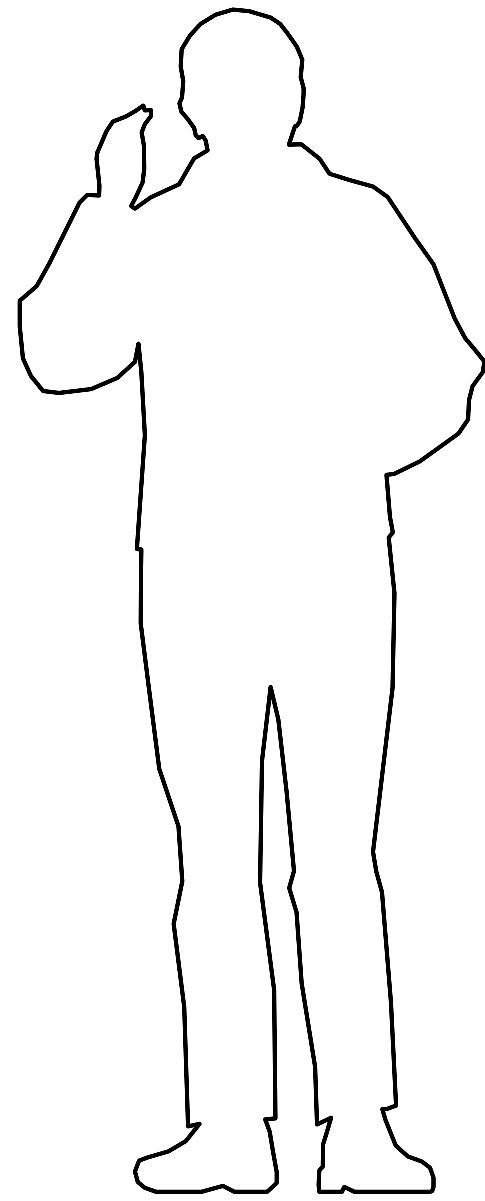
DRAFTED BY:  
DATE:  
SCALE:  
PLATE:

SCOTT TEDMON-JONES  
OCTOBER 27, 2014  
1/2" = 1' - 0"  
5

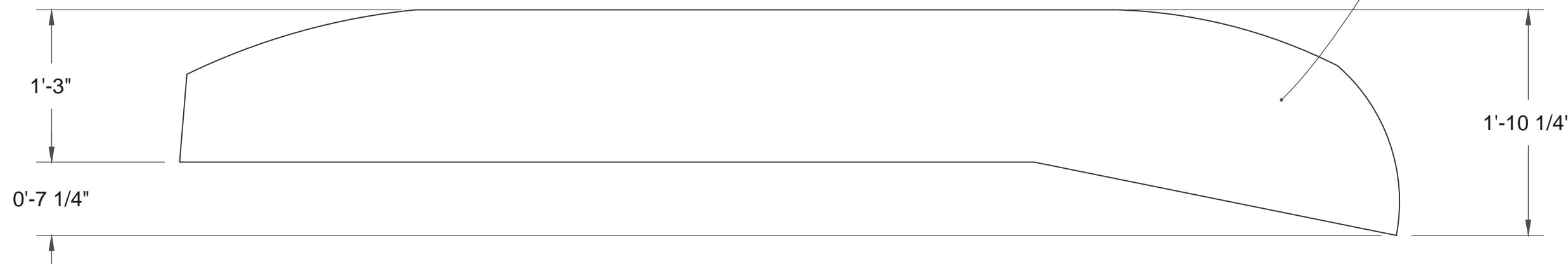
WALL ELEVATIONS

OF 6



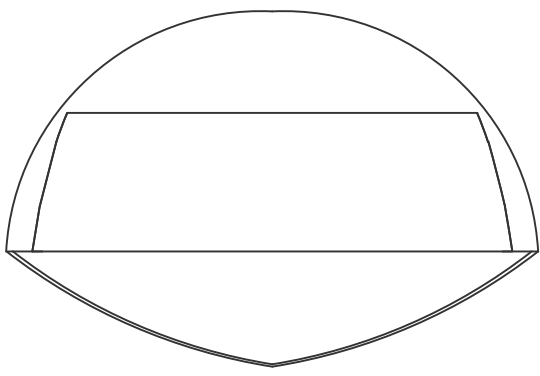


TOP VIEW



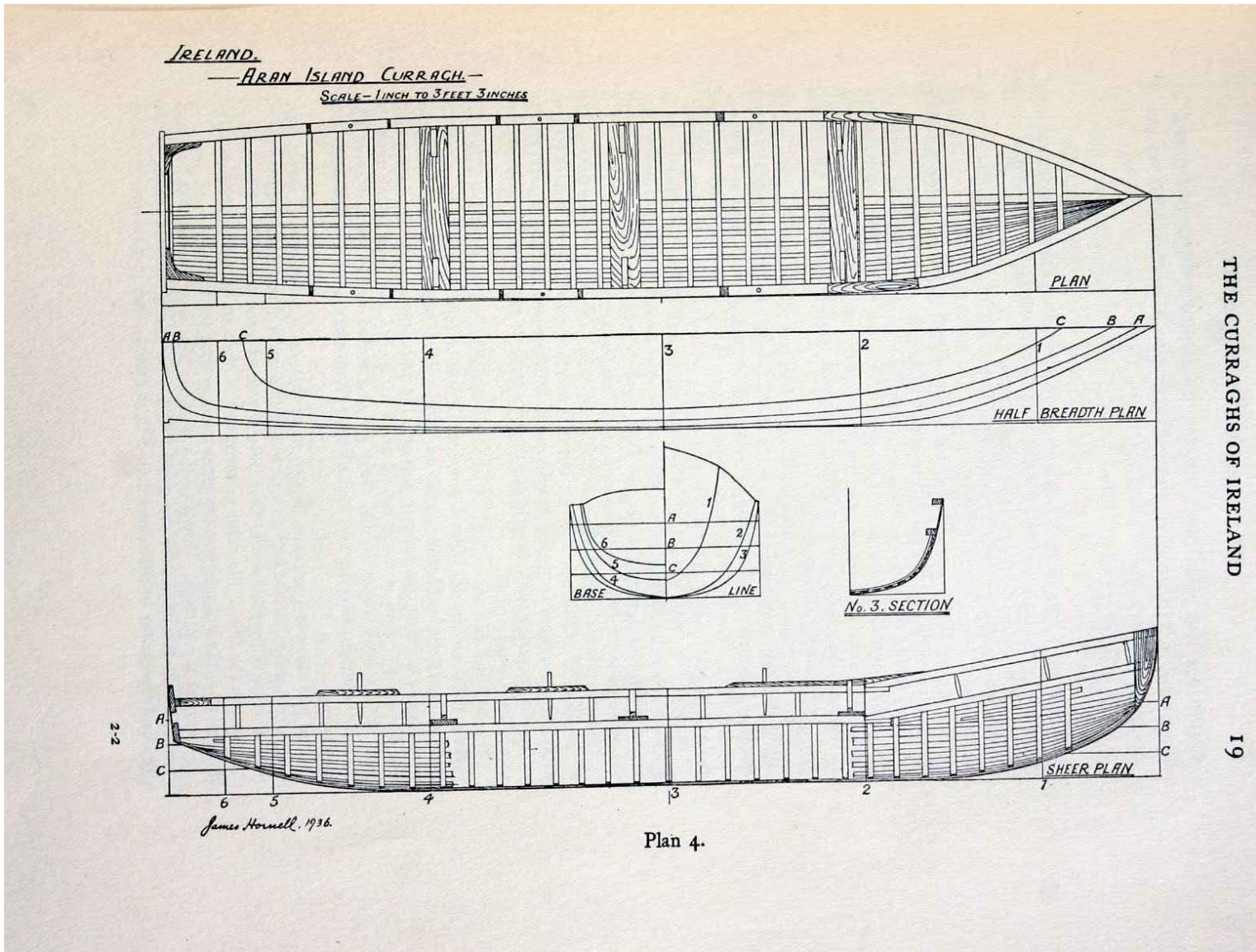
SIDE VIEW

MUSLIN COVERED  
FRAME, PAINTED  
GLOSS BLACK



REAR VIEW

NOTES:  
  
THE BOAT WILL REMAIN UPSIDE DOWN; WE WILL NOT SEE THE INTERIOR.  
  
ACTORS WILL CARRY THE BOAT INTO POSITION DURING A SCENE CHANGE. THE FRAMING SHOULD BE AS MINIMAL AS POSSIBLE.



REFERENCE IMAGES

BUILD

THE COLLEGE AT BROCKPORT  
TOWER MAINSTAGE THEATRE

THE CRIPPLE OF  
INISHMAAN

By:  
Director:  
Lighting Designer:  
Costume Designer:  
Production Manager:  
Technical Director:

MARTIN McDONAGH  
PADRAIC LILLIS  
GARY MUSANTE  
GAIL ARGETSINGER  
PAUL SCHREINER  
GARY MUSANTE

SCOTT TEDMON-JONES  
SCOTT@STDESIGN.COM 412-760-4476 WWW.STDESIGN.COM

THIS DRAWING AND THE IDEAS, ARRANGEMENTS, DESIGNS AND PLANS CONTAINED HEREIN OR REPRESENTED THEREBY ARE OWNED AND REMAIN THE PROPERTY OF SCOTT TEDMON-JONES, AND HAVE BEEN CREATED AND DEVELOPED FOR USE ON AND IN CONNECTION WITH THE PROJECT SPECIFIED. NEITHER THIS DRAWING, NOR ANY OF SUCH IDEAS, ARRANGEMENTS, DESIGNS OR PLANS SHALL BE APPROPRIATED BY OR DISCLOSED TO ANY PERSON OR FIRM FOR ANY USE, WHATSOEVER, EXCEPT BY WRITTEN PERMISSION OF SCOTT TEDMON-JONES.

THESE DRAWINGS REPRESENT VISUAL CONCEPTS AND CONSTRUCTION SUGGESTIONS ONLY. THE DESIGNER IS NOT QUALIFIED TO DETERMINE THE STRUCTURAL APPROPRIATENESS OF THESE DESIGNS, AND WILL NOT ASSUME RESPONSIBILITY FOR IMPROPER ENGINEERING CONSTRUCTION AND/OR HANDLING OF THE SCENERY REPRESENTED HEREIN.

REVISIONS:  
10/27  
-NO CHANGES

DRAFTED BY:  
SCOTT TEDMON-JONES

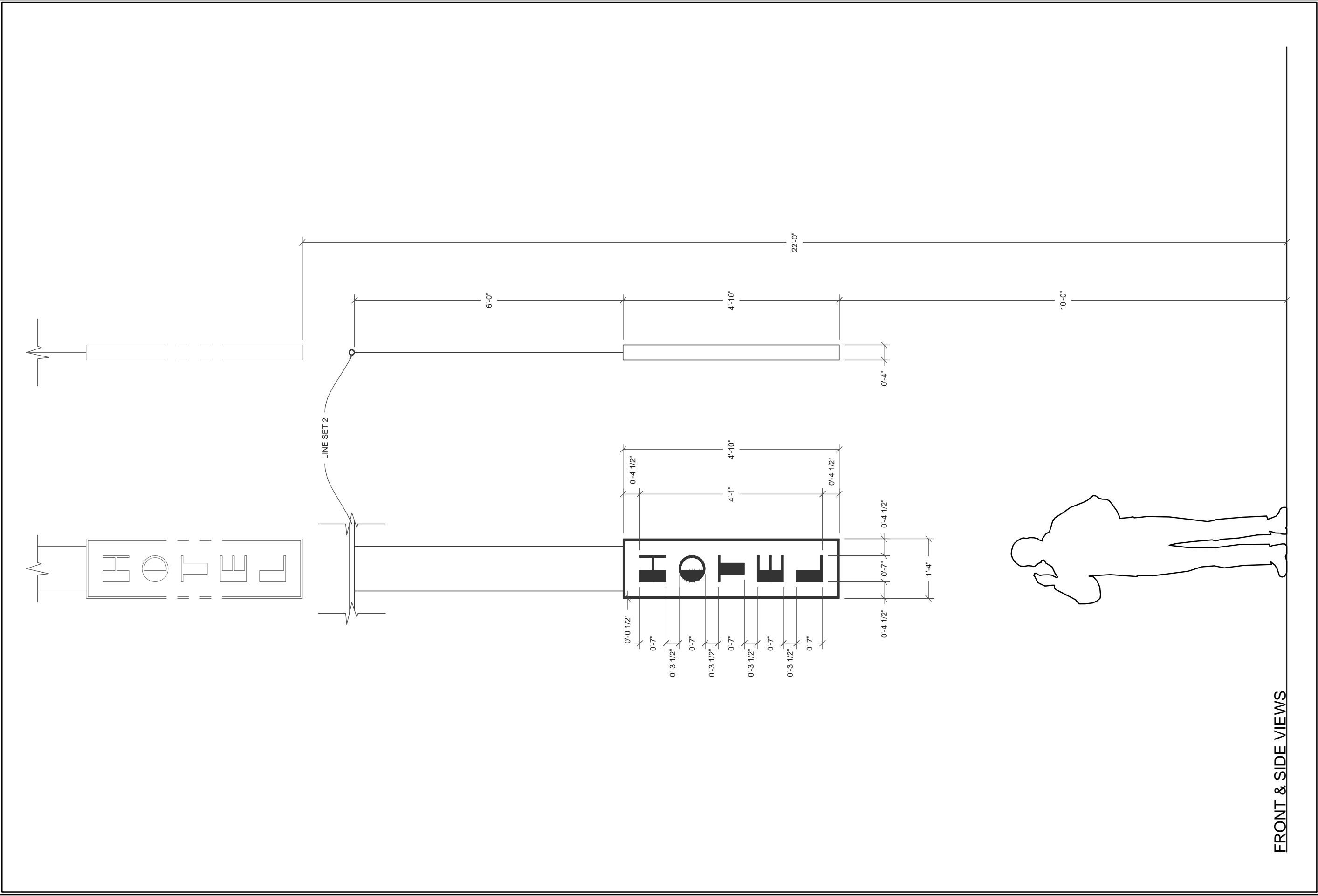
DATE:  
OCTOBER 27, 2014

SCALE:  
1" = 1' - 0"

PLATE:  
6  
OF 6

CURRAGH  
ELEVATIONS





BUILD

THE COLLEGE AT BROCKPORT  
TOWER MAINSTAGE THEATRE

THE CRIPPLE OF  
INISHMAAN

By:  
Director:  
Lighting Designer:  
Costume Designer:  
Production Manager:  
Technical Director:

MARTIN McDONAGH  
PADRAIC LILLIS  
GARY MUSANTE  
GAIL ARGETSINGER  
PAUL SCHREINER  
GARY MUSANTE

SCOTT TEDMON-JONES  
SCOTT.TEDMON-JONES.COM 402-263-6476 WWW.STJDESIGN.COM

THIS DRAWING AND THE IDEAS, ARRANGEMENTS, DESIGNS AND PLANS CONTAINED HEREIN OR REPRESENTED THEREBY ARE OWNED AND REMAIN THE PROPERTY OF SCOTT TEDMON-JONES AND HAVE BEEN CREATED AND DEVELOPED FOR USE ON, AND IN CONNECTION WITH, THE PROJECT SPECIFIED. NEITHER THIS DRAWING, NOR ANY OF SUCH IDEAS, ARRANGEMENTS, DESIGNS OR PLANS SHALL BE APPROPRIATED BY OR DISCLOSED TO ANY PERSON OR FIRM FOR ANY USE WHATSOEVER, EXCEPT BY WRITTEN PERMISSION OF SCOTT TEDMON-JONES.

THESE DRAWINGS REPRESENT VISUAL CONCEPTS AND CONSTRUCTION SUGGESTIONS ONLY. THE DESIGNER IS NOT QUALIFIED TO DETERMINE THE STRUCTURAL APPROPRIATENESS OF THESE DESIGNS, AND WILL NOT ASSUME RESPONSIBILITY FOR IMPROPER ENGINEERING, CONSTRUCTION AND/OR HANDLING OF THE SCENERY REPRESENTED HEREIN.

REVISIONS:

DRAFTED BY:  
DATE:

SCOTT TEDMON-JONES  
November 10, 2014

SCALE:

1/2" = 1' - 0"

PLATE:

1

OF 1

HOTEL SIGN  
LIGHT BOX  
ELEVATION