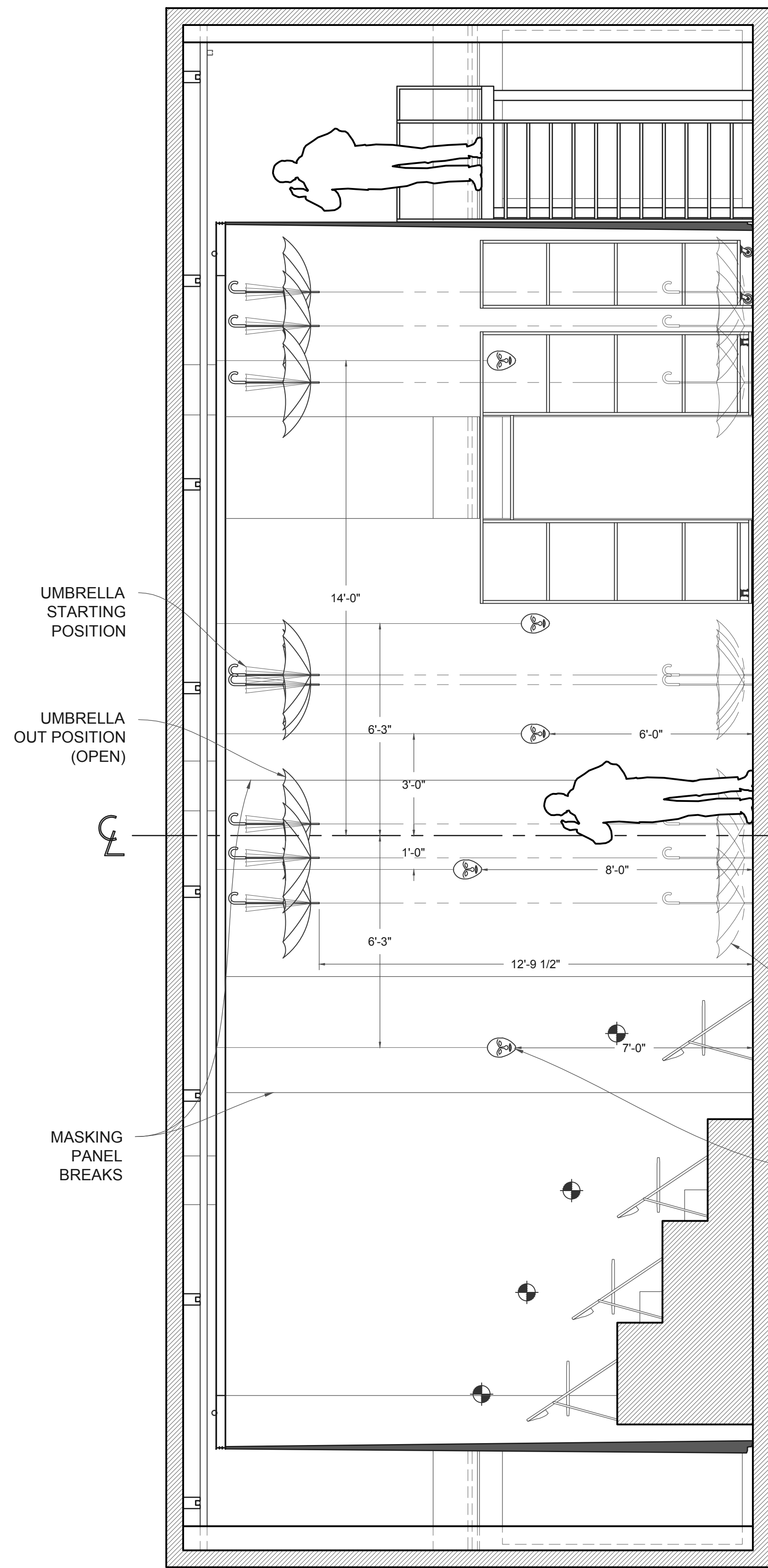
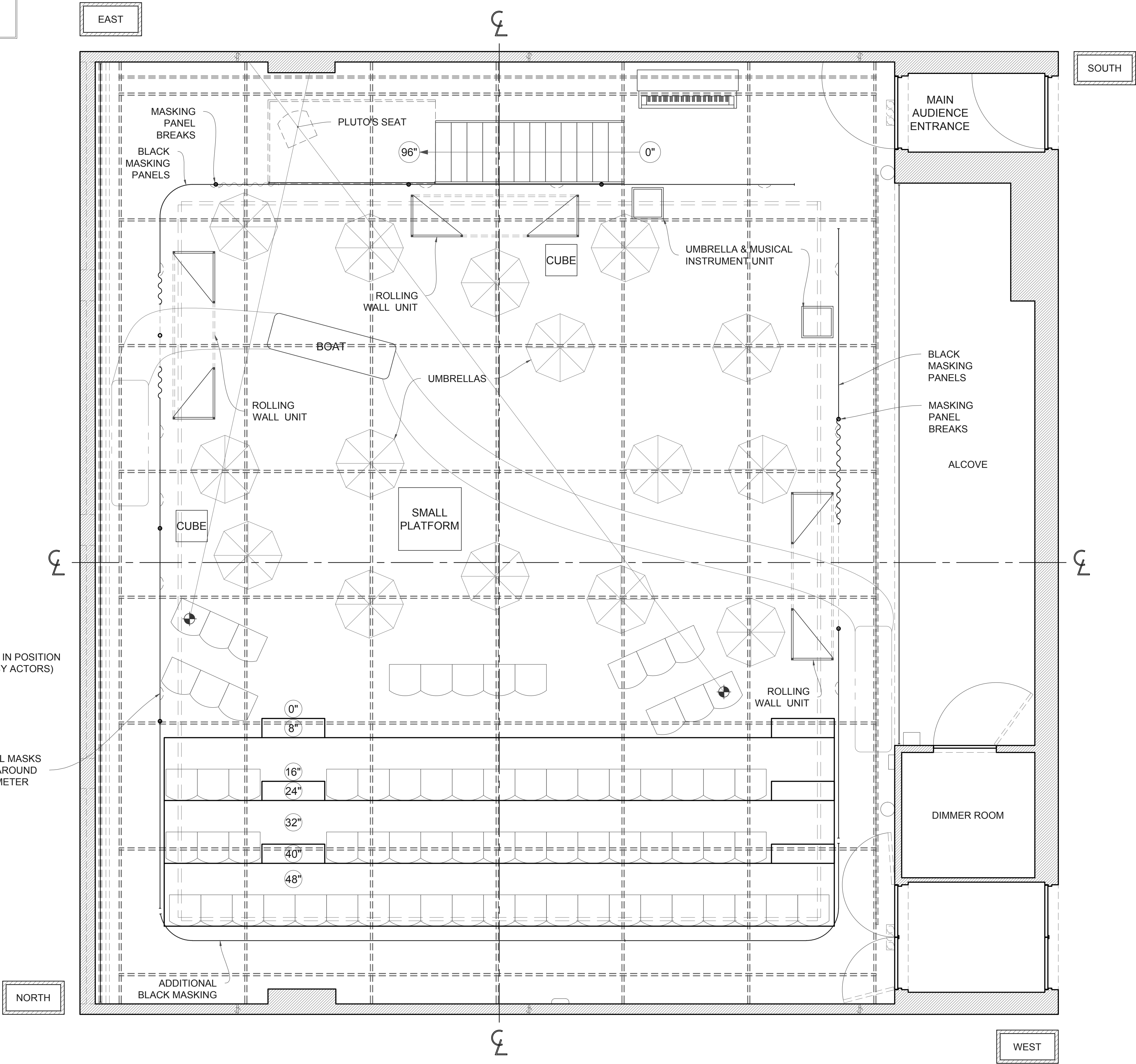


- NOTES:
- ROLLING WALL UNITS AND CUBES WILL BE REPOSITIONED BY ACTORS DURING THE SHOW.
 - ACTORS WILL ENTER IN-BETWEEN MASKING PANELS.
 - 6 OF THE NEUTRAL MASKS HUNG AROUND THE PERIMETER WILL BE REMOVED AND WORN BY THE CHORUS



NORTH WALL SECTION



GROUND PLAN

BUILD

THE JULLIARD SCHOOL DRAMA DIVISION
ROOM 301

THE FROGS

BY ARISTOPHANES

Translated by:
DAVID BARRETT

Director:
ORLANDO PABOTOY

Lighting Designer:
DAN SCULLY

Costume Designer:
JUNGHYUN GEORGIA LEE

Sound Designer:
FABIAN OBISPO

Production Manager:
J.B. BARRICKLO

Technical Director:
RICHARD GIRTAIN

SCOTT TEDMON-JONES

SCOTT@STDESIGN.COM 412-760-4474 WWW.STDESIGN.COM

THIS DRAWING AND THE IDEAS, ARRANGEMENTS, DESIGNS AND PLANS CONTAINED HEREIN OR REPRESENTED THEREBY ARE OWNED AND REMAIN THE PROPERTY OF SCOTT TEDMON-JONES, AND HAVE BEEN CREATED AND DEVELOPED FOR USE ON AND IN CONNECTION WITH THE PROJECT SPECIFIED. NEITHER THIS DRAWING, NOR ANY OF SUCH IDEAS, ARRANGEMENTS, DESIGNS OR PLANS SHALL BE APPROPRIATED BY OR DISCLOSED TO ANY PERSON OR FIRM FOR ANY USE WHATSOEVER, EXCEPT BY WRITTEN PERMISSION OF SCOTT TEDMON-JONES.

THESE DRAWINGS REPRESENT VISUAL CONCEPTS AND CONSTRUCTION SUGGESTIONS ONLY. THE DESIGNER IS NOT QUALIFIED TO DETERMINE THE STRUCTURAL APPROPRIATENESS OF THESE DESIGNS, AND WILL NOT ASSUME RESPONSIBILITY FOR IMPROPER ENGINEERING, CONSTRUCTION AND/OR HANDLING OF THE SCENERY REPRESENTED HEREIN.

REVISIONS:

10/20

- ADJUSTED SEATING
- ADJUSTED UMBRELLAS
- ADDED HANGING MASKS

10/27

- ADDED MASKING PANEL BREAKS

DRAFTED BY:
SCOTT TEDMON-JONES

DATE:
OCTOBER 27, 2014

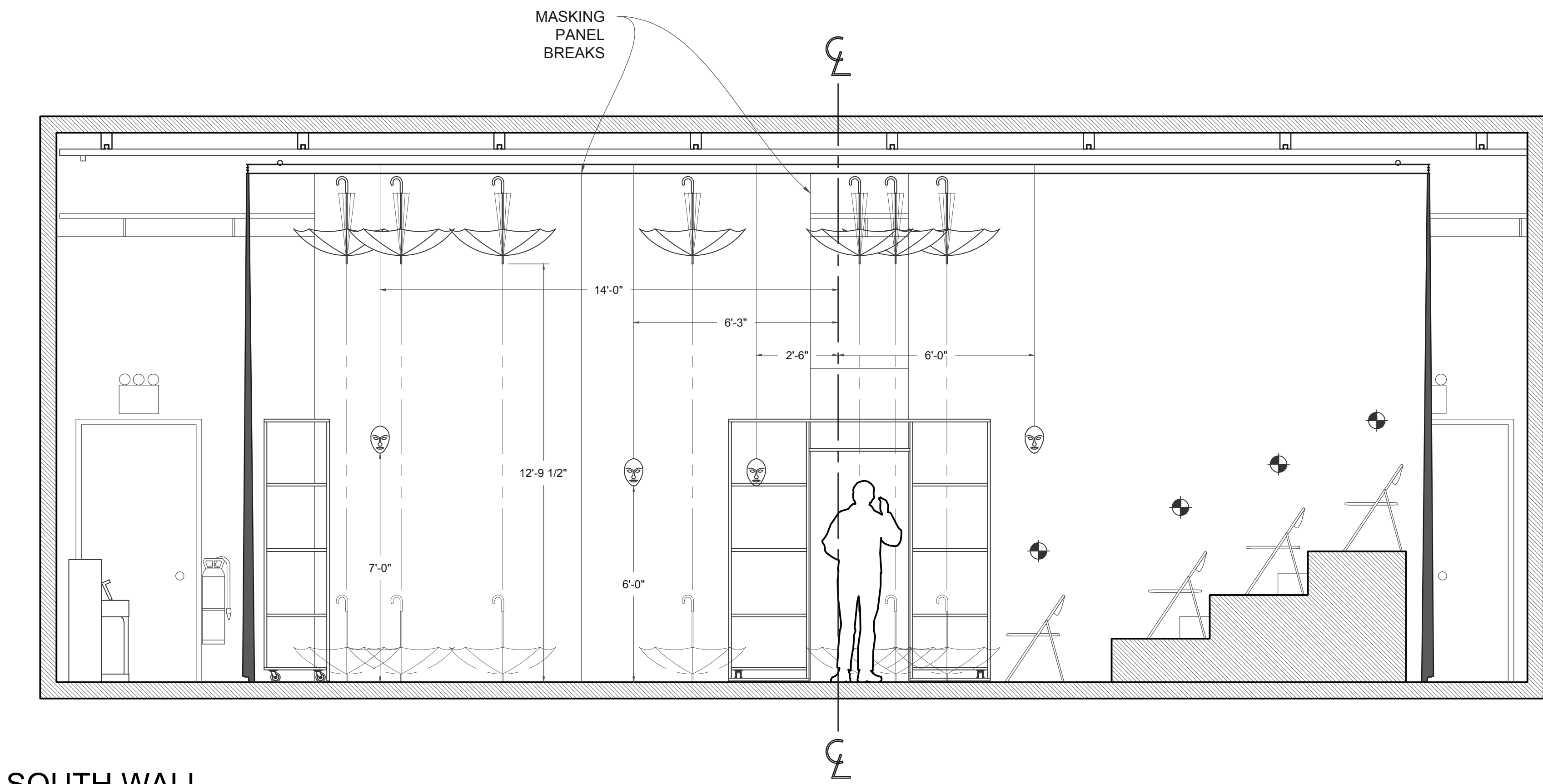
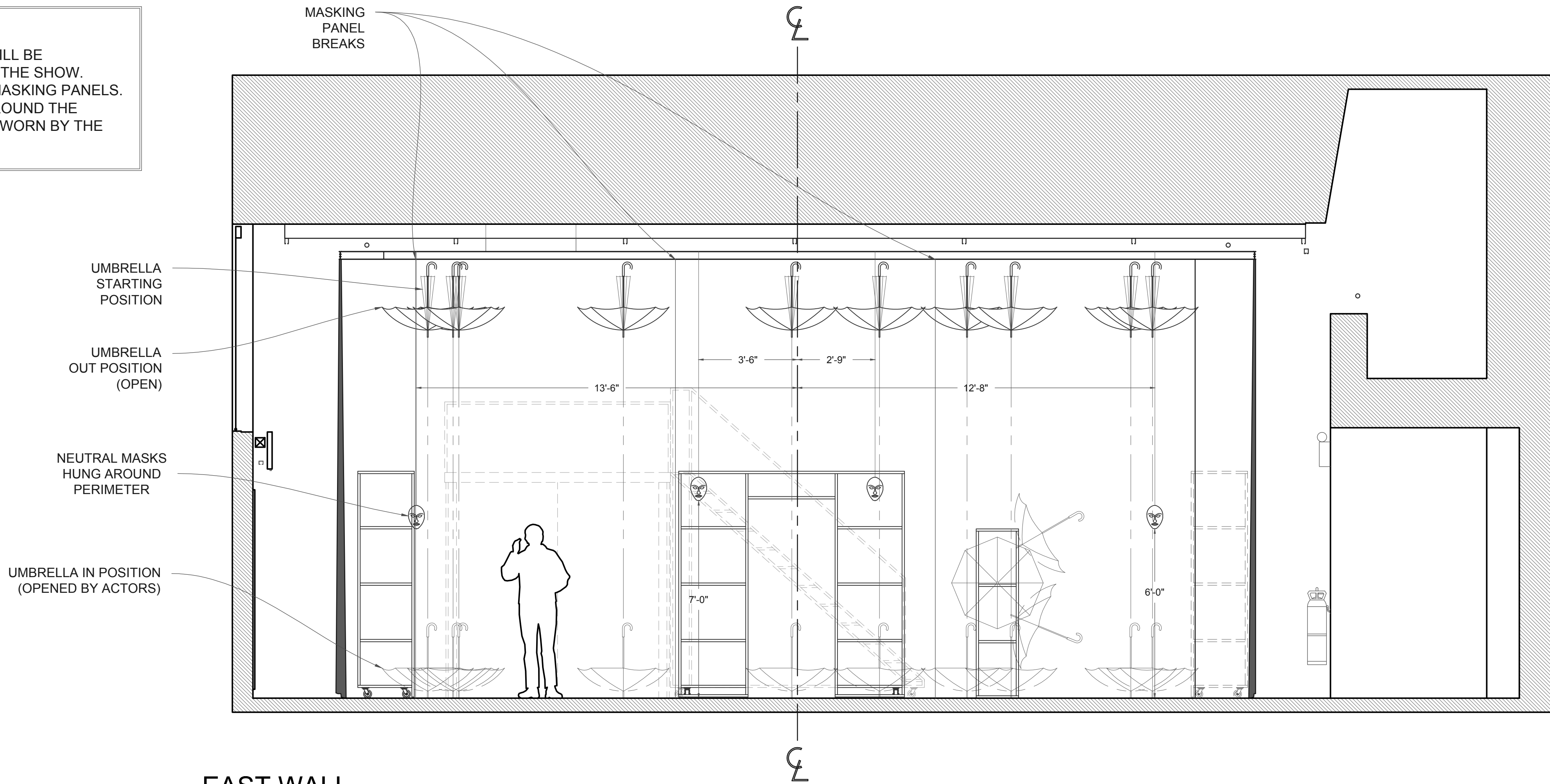
SCALE:
3/8" = 1' - 0"

PLATE:
1

OF 3

GROUND PLAN
& NORTH WALL
SECTION

- NOTES:
- ROLLING WALL UNITS AND CUBES WILL BE REPOSITIONED BY ACTORS DURING THE SHOW.
 - ACTORS WILL ENTER IN-BETWEEN MASKING PANELS.
 - 6 OF THE NEUTRAL MASKS HUNG AROUND THE PERIMETER WILL BE REMOVED AND WORN BY THE CHORUS



BUILD	
THE JULLIARD SCHOOL DRAMA DIVISION ROOM 301	
THE FROGS BY ARISTOPHANES	
Translated by: DAVID BARRETT	
Director: ORLANDO PABOTOY	
Lighting Designer: DAN SCULLY	
Costume Designer: JUNGHYUN GEORGIA LEE	
Sound Designer: FABIAN OBISPO	
Production Manager: J.B. BARRICKLO	
Technical Director: RICHARD GIRTAIN	
SCOTT TEDMON-JONES SCOTT@STJDESIGN.COM 412-760-4474 WWW.STJDESIGN.COM	
<p>THIS DRAWING AND THE IDEAS, ARRANGEMENTS, DESIGNS AND PLANS CONTAINED HEREIN OR REPRESENTED THEREBY ARE OWNED AND REMAIN THE PROPERTY OF SCOTT TEDMON-JONES, AND HAVE BEEN CREATED AND DEVELOPED FOR USE ON AND IN CONNECTION WITH THE PROJECT SPECIFIED. NEITHER THIS DRAWING, NOR ANY OF SUCH IDEAS, ARRANGEMENTS, DESIGNS OR PLANS SHALL BE APPROPRIATED BY OR DISCLOSED TO ANY PERSON OR FIRM FOR ANY USE WHATSOEVER, EXCEPT BY WRITTEN PERMISSION OF SCOTT TEDMON-JONES.</p> <p>THESE DRAWINGS REPRESENT VISUAL CONCEPTS AND CONSTRUCTION SUGGESTIONS ONLY. THE DESIGNER IS NOT QUALIFIED TO DETERMINE THE STRUCTURAL APPROPRIATENESS OF THESE DESIGNS, AND WILL NOT ASSUME RESPONSIBILITY FOR IMPROPER ENGINEERING CONSTRUCTION AND/OR HANDLING OF THE SCENERY REPRESENTED HEREIN.</p>	
REVISIONS: 10/20 - ADJUSTED SEATING - ADJUSTED UMBRELLAS - ADDED HANGING MASKS 10/27 - ADDED MASKING PANEL BREAKS	
DRAFTED BY: SCOTT TEDMON-JONES	
DATE: OCTOBER 27, 2014	
SCALE: 3/8" = 1' - 0"	
PLATE: 2	
OF 3	
EAST WALL & SOUTH WALL SECTIONS	

